

# **1080P VIDEO PEN**

## **SKU: LM1080P**



**USER MANUAL**  
**FCC CE**

Version 1

# **THANK YOU FOR PURCHASING THE LM1080P**

---

Please read this manual before operating the LM1080P and keep it handy.

Your purchase should include:

1 x 1080P Video Pen

1 x Micro USB cable

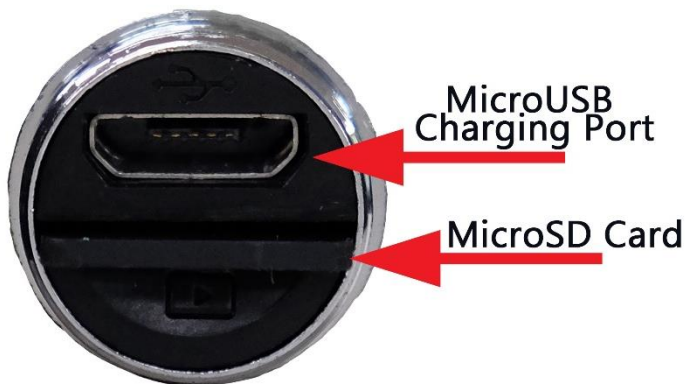
Version 1

# GET FAMILIAR WITH WITH YOUR LM1080P

---



Version 1



Version 1

# **OPERATING THE LM1080P**

---

## **HOW TO CHARGE THE HD VIDEO PEN**

1. Connect the USB charging cable to an A/C adapter.
2. Connect the USB charging cable to the camcorder pen.
  - The Indicator Light will flash red while charging.
  - When the Indicator Light is solid red, the pen is fully charged.

## **HOW TO TURN THE HD VIDEO PEN ON**

1. Insert a MicroSD card, if not already present
2. Press and hold the Power Button for about 5 seconds.
  - The Indicator Light will turn on and be solid blue.

- The pen is in **standby mode**.
3. To turn the pen off, hold the top power button for 6 seconds and the blue LED will go out.

## **HOW TO RECORD VIDEO**

1. Power the pen on so it enters standby mode.
2. To record in continuous recording video mode, hold the button for 2 seconds and let go.
  - The blue light will blink two times and then go out.
  - The pen is now recording video.
3. To stop recording and return to standby mode, press the button once quickly. The indicator light will turn back on to solid blue for standby mode. Your video has been saved and the pen has been returned to standby mode.

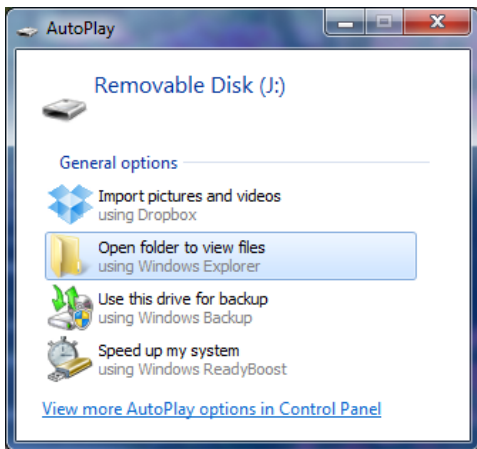
## **HOW TO TAKE PHOTOGRAPHS**

1. Power the pen on so it enters standby mode.
2. To capture a photograph, press the button once quickly.
  - The Indicator Light will blink once and then return to solid blue.
3. The pen has taken a photograph.

# HOW TO RETRIEVE FILES TO PC

---

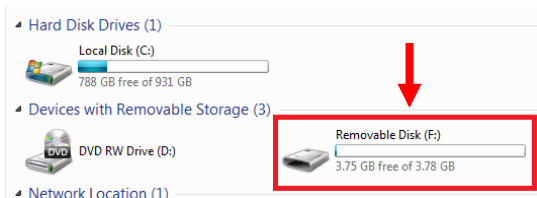
1. Plug the microSD card into your PC using a MicroSD card reader.
2. Locate “Removable Disk” inside the (My) Computer folder.
  - AutoPlay Removable Disk > Open folder to view files





Or...

- Go to Start > Computer > Removable Disk



1. Open the PHOTO folder to view your photos.
2. Open the VIDEO folder to view your videos.
3. Double click on the file you want to view.
  - VLC Player is recommended for watching videos.

Version 1

# **TROUBLESHOOTING**

---

## **THE DEVICE WON'T TURN ON**

- Charge the device for at least 2 hours before the first use.
- Make sure the charging cable is securely inserted into the device and into the power source.

## **THE DEVICE ISN'T CHARGING**

- Replace the charging cable with another Micro USB cable.
- Try another AC Adapter.

## **THE RED LIGHT BLINKS 5 TIMES AND THEN TURNS OFF WHEN I POWER ON THE PEN**

- You need to insert a MicroSD card into the pen.
- Ensure the MicroSD card is pushed in all the way.

## **THE RED LIGHT FLASHES 3 TIMES AND THEN THE PEN IS TURNING OFF**

- The battery life is running low.
  - Charge the battery.

## **MY COMPUTER DOESN'T RECOGNIZE THE DEVICE**

- Unplug the device from your PC and reboot the device.
- Unplug the device from your PC and reboot your PC.
- Try using another USB slot on your PC.
- Replace the USB cable.

## **THE SOUND OR VIDEO IS UNCLEAR**

- The device needs charging.

## **OTHER PROBLEMS**

- Call our technical support at **470-242-1340**

## SPECIFICATIONS

---

<b>Video Resolution</b>	1920X1080 @ 30 FPS
<b>Video Format</b>	AVI
<b>Recording Time</b>	Up to 75 minutes
<b>Motion Detection</b>	No
<b>Photo Resolution</b>	4032x3024
<b>Photo Format</b>	JPEG
<b>Battery Life</b>	Up to 75 minutes
<b>Type of Memory</b>	MicroSD Card
<b>Max. Memory</b>	Up to 128GB
<b>Recording Capacity</b>	~800MB every 5 minutes
<b>Player Software</b>	VLC recommende
<b>USB Interface</b>	Micro USB
<b>Operating System</b>	Windows 7 & Up Mac OS